

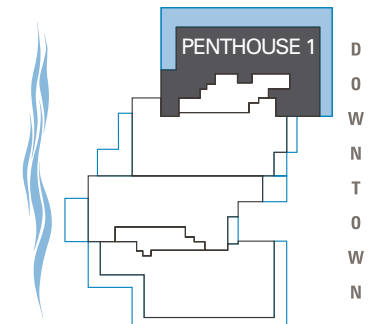
# PENTHOUSE 01

4 BEDROOMS, 5 FULL AND 2 HALF BATHROOMS  
Living Area 5,500 sf | Terraces 2,800 sf

## LOWER LEVEL



## PH1 PLAN



SARASOTA BAY

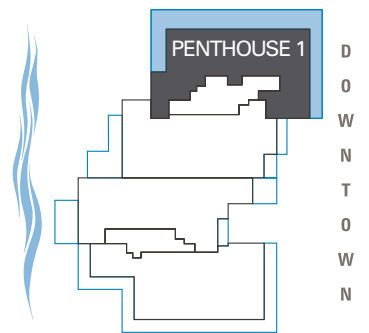
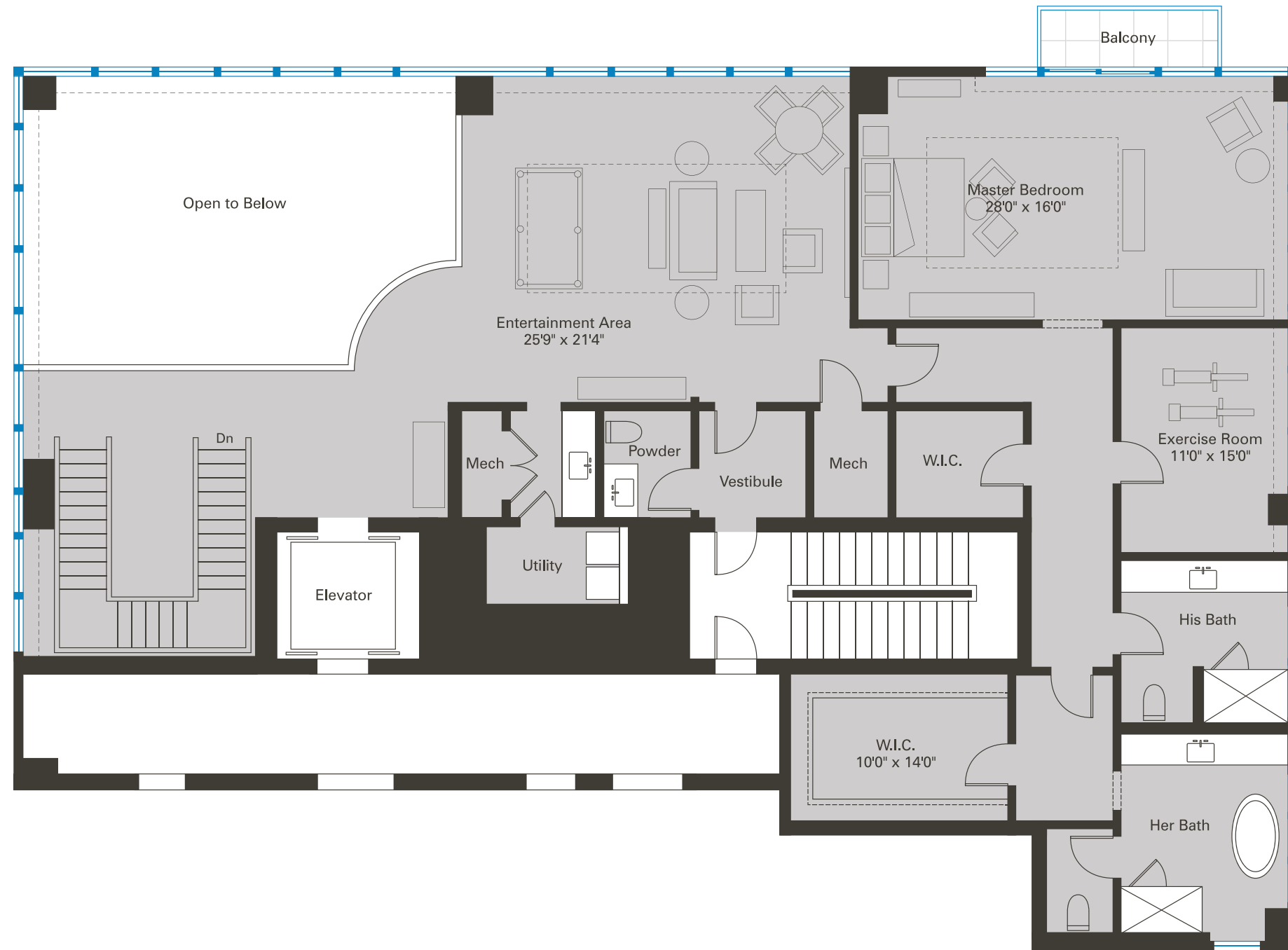


All dimensions are approximate. This floorplan is subject to change without notice. There are various methods of calculating the total square footage of a residence, and depending on the method of calculation, the quoted square footage of a residence may vary. The total square footages as shown in this brochure are based on the "Architectural Method" of measurement, which includes portions of the exterior walls, interior columns and 50 percent of demising walls.



# PENTHOUSE 01

## UPPER LEVEL



All dimensions are approximate. This floorplan is subject to change without notice. There are various methods of calculating the total square footage of a residence, and depending on the method of calculation, the quoted square footage of a residence may vary. The total square footages as shown in this brochure are based on the "Architectural Method" of measurement, which includes portions of the exterior walls, interior columns and 50 percent of demising walls.

